



Davco provides an environment for **innovative** people developing proactive **industrial solutions.**

Davco Twin-Cut Mobile Automated Sawmill

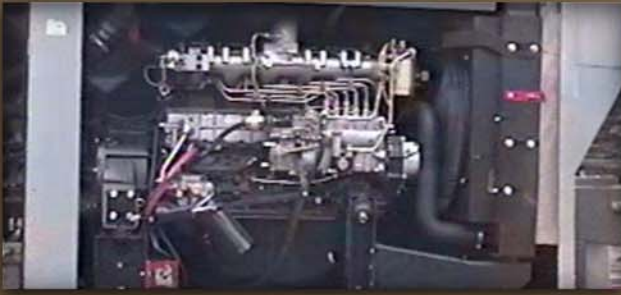


The unique circular saw cuts in both directions to maximize productivity.

Easy and comfortable to operate, the entire unit is run from a climate-controlled, quiet, single operator cab.



The Davco twin-Cut is designed with a high level of reliability, low maintenance and an efficient flow pattern for increased productivity.



This powerful machine is backed by a 174hp Isuzu diesel engine and handles logs between 5" and 28" in diameter and 8' to 20' in length.

Fully automated, the Twin-Cut includes a two saw edger with the ability to trim flitches from 2" to 12".



The Twin-Cut can be transported to any location and set up in one hour. Highway legal throughout North America, the retractable live logdeck and telescopic outfeed transfer table allow for a total transporting length of 40'.



The Twin-Cut's efficient flow pattern is completed with sawdust and waste conveyors.

Bus 780.532.1850
Fax 780.532.3626

County Industrial Park
Box 17, Site 1, RR3
Grande Prairie, AB, Canada
T8V 5N3

davco@telusplanet.net
www.davco.ab.ca